

Diffuse Reflective Type with Long Sensing Distance

Small, diffuse reflective type with long sensing distance

Upgrade

Features

- Realization of long sensing distance (2m) by special optical design.
- Protection structure IP64 (IEC standard) (Upgrade)
- Built-in stable light ON indicator.
- Includes sensitivity adjustment function.
- 2 color LED display.

⚠ Please read "Caution for your safety" in operation manual before using.



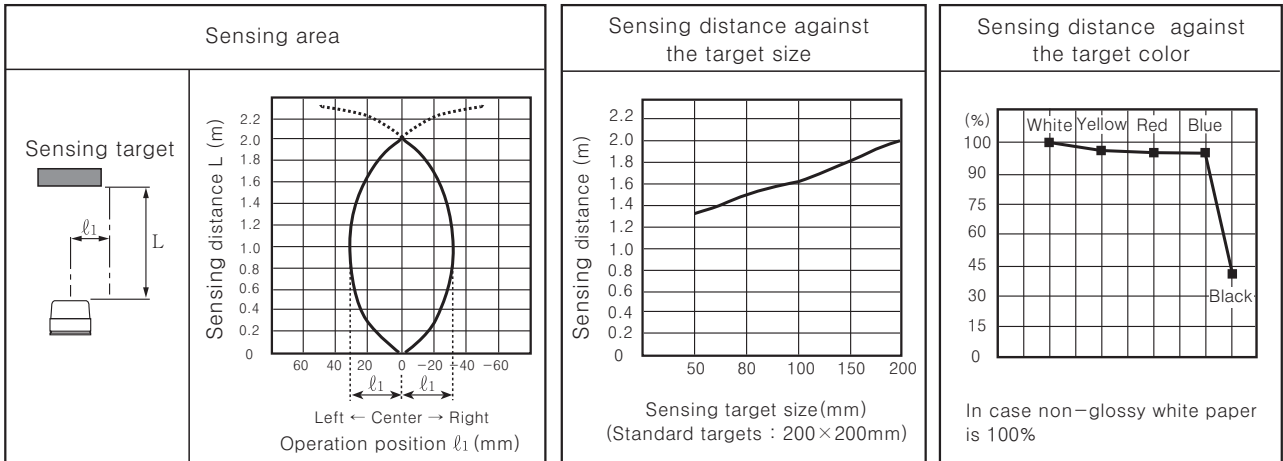
Specifications

Model	NPN open collector	BA2M-DDT	BA2M-DDTD
	PNP open collector	BA2M-DDT-P	BA2M-DDTD-P
Sensing type	Diffuse reflective		
Sensing distance	2m (Non-glossy white paper 200×200mm)		
Sensing target	Translucent, Opaque materials		
Hysteresis	Max. 20% at sensing distance		
Response time	Approx. 1ms		
Power supply	12-24VDC ±10% (Ripple P-P : Max. 10%)		
Current consumption	Max. 15mA (Max. 30mA when the output is ON)		
Light source	Infrared LED (850nm)		
Sensitivity adjustment	Built-in VR		
Operation mode	Light ON	Dark ON	
Control output	NPN or PNP open collector output • Load voltage : Max. 26.4VDC • Load current : Max. 100mA • Residual voltage: NPN : Max. 1V, PNP : Min. (Power voltage -2.5V)		
Protection circuit	Reverse polarity protection, Output short-circuit protection		
Receiver	Photo diode (Built-in IC)		
Indicator	• Operation : Red • Stability : Orange (Light ON), Green (Dark ON)		
Connection	Outgoing cable		
Insulation resistance	Min. 20MΩ (at 500VDC megger)		
Noise strength	±240V the square wave noise (pulse width : 1μs) by the noise simulator		
Dielectric strength	1000VAC 50/60Hz for 1minute		
Vibration	1.5mm amplitude at frequency of 10 to 55Hz in each of X, Y, Z directions for 2 hours		
Shock	100m/s ² (10G) in X, Y, Z directions for 3 times		
Ambient illumination	Sunlight : Max. 11,000lx, Incandescent lamp : Max. 3,000lx (Receiving illumination)		
Ambient temperature	Operation : -20 to 55°C, Storage : -25 to 70°C (at non-freezing status)		
Ambient humidity	Operation, Storage : 35 to 85%RH (at non-dew status)		
Protection	IP64 (IEC standard)		
Material	Case : ABS, Lens : Acrylic		
Cable	3P, φ3mm, Length : 2m (AWG24, Core wire φ0.8mm annealed copper solid wire, 40 strands insulator, Outer diameter φ1mm)		
Accessory	Adjustment driver		
Approval	CE		
Unit weight	Approx. 50g		

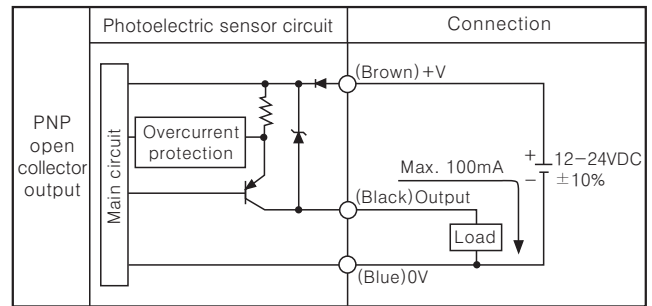
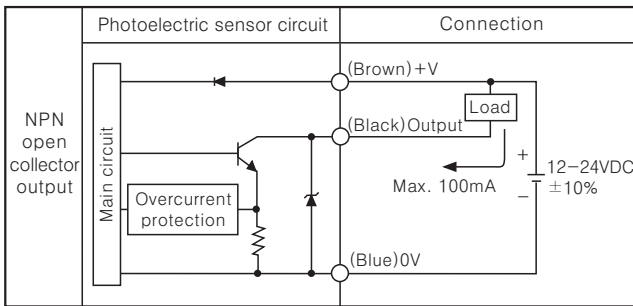
- (A) Photo electric sensor
- (B) Fiber optic sensor
- (C) Door/Area sensor
- (D) Proximity sensor
- (E) Pressure sensor
- (F) Rotary encoder
- (G) Connector/Socket
- (H) Temp. controller
- (I) SSR/Power controller
- (J) Counter
- (K) Timer
- (L) Panel meter
- (M) Tacho/Speed/Pulse meter
- (N) Display unit
- (O) Sensor controller
- (P) Switching power supply
- (Q) Stepping motor & Driver & Controller
- (R) Graphic/Logic panel
- (S) Field network device
- (T) Production stoppage models & replacement

BA Series

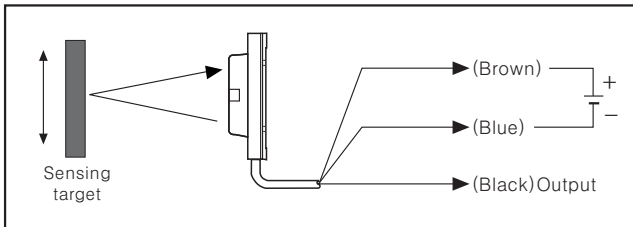
Feature data



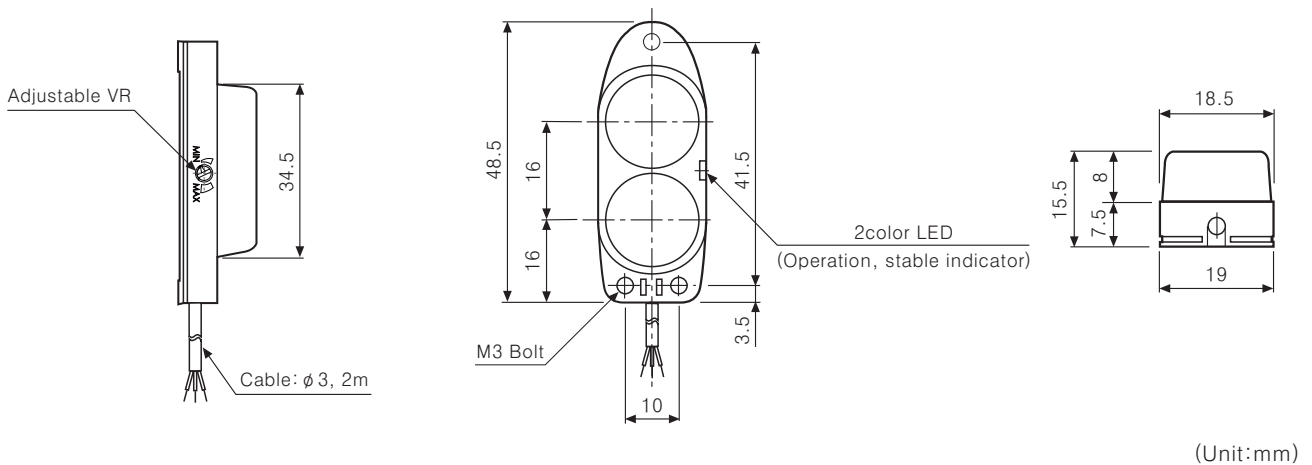
Control output diagram



Connections



Dimensions

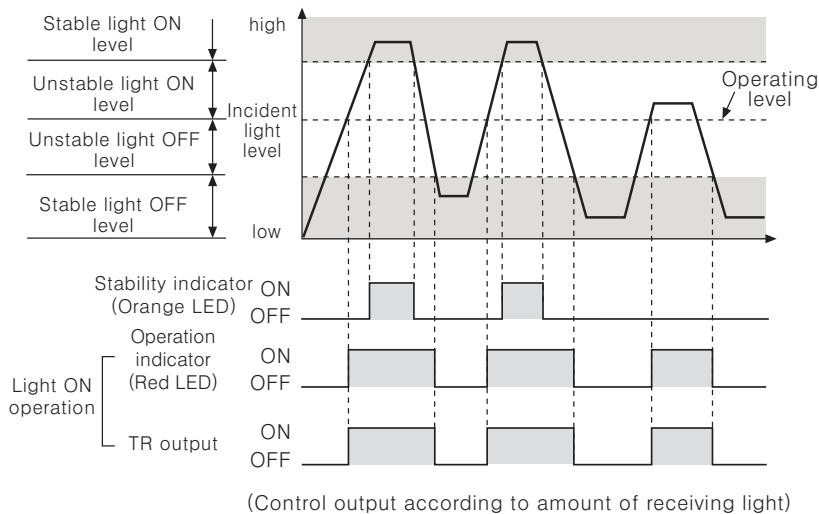


Diffuse Reflective Type with Long Sensing Distance

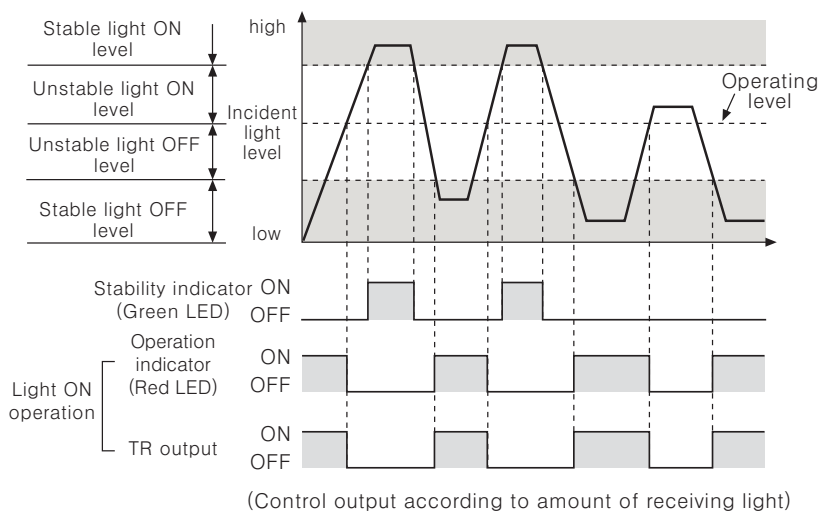
■ Operation mode

If the control output terminal is short-circuited or overcurrent condition exists, the control output will turn off due to protection circuit.

● Light ON mode



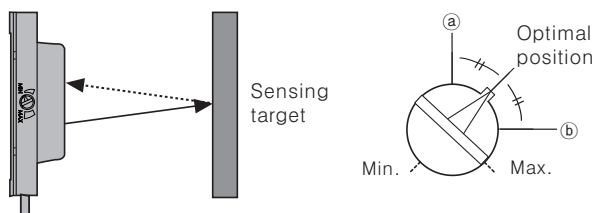
● Dark ON mode



■ Mounting and sensitivity adjustment

Please check wiring after setting the target and supply the power to this sensor.

● Optical axis adjustment



After place a sensing target, adjust the sensor to up or down, right or left. Then, fix the sensor in center of position where the indicator is operating.

● Adjustment

1. When sensing the object, set the sensitivity adjustment in stable Light ON area (orange: Light On, Green: Dark On) as shown '■ Operation mode'.
2. The sensitivity should be adjusted depending on a sensing target or mounting place.
3. Set the target at a position to be detected by the beam, then turn the adjuster until position ① where the indicator turns on from min. position of the adjuster.
4. Take the target out of the sensing area, then turn the adjuster until position ② where the indicator turns on. If the indicator dose not turn on, Max. position ②.
5. Set the adjuster at the center of two switching position ①, ②.

※ The sensing distance indicated on specification chart is for 200×200mm of non-glossy white paper. Be sure that it can be different by size, surface and gloss of target.

(A) Photo electric sensor

(B) Fiber optic sensor

(C) Door/Area sensor

(D) Proximity sensor

(E) Pressure sensor

(F) Rotary encoder

(G) Connector/Socket

(H) Temp. controller

(I) SSR/Power controller

(J) Counter

(K) Timer

(L) Panel meter

(M) Tacho/Speed/Pulse meter

(N) Display unit

(O) Sensor controller

(P) Switching power supply

(Q) Stepping motor & Driver & Controller

(R) Graphic/Logic panel

(S) Field network device

(T) Production stoppage models & replacement